



Response & Coordination

June-July Wildfires

June 28, 2024

****FOR IMMEDIATE RELEASE****

Contact: Brian McGrath or Andy VanSciver

Phone: (805) 389-9746

Email: PIOFire@ventura.org

Fire Season Preparedness and Response Levels Declared

THOUSAND OAKS, Calif. – Due to abnormally high fuel moisture levels and late-season precipitation, the Ventura County Fire Department (VCFD) delayed the start of "Wildland Fire Season."

Today, VCFD and local fire jurisdictions announce the commencement of the 2024 Fire Season for all areas of Ventura County, effective June 30th, 2024.



2024 Fire Season Announced

Since the fire season
press release...

- Sentinel Fire
- Knolls Fire
- Sequoia Fire
- Sharp Fire
- Rancho Fire
- View Fire
- Rockfield Fire
- Ventu Fire
- Corbin Fire

Recent Wildfires



Sentinel Fire

➤ Friday, 6/28

➤ 5 acres

Knolls Fire

➤ Sunday, 6/30

➤ Under 1 acre



Ventura Co Dispatch

Vegetation Fire

N VENTURA AVE, VENTURA (COUNTY), CA

AIROPS10 AIRTANKER1 AIRTANKER2 **AT02 B10 B11 B2**
B5 B51 B54 C11 C12 CDF9212G CDF9310C CDF9340C
CDFHCST **CMD11** CPT6 CPT7 **DIV2 DOZ3 DOZ4 E125**
E22 E25 E26 E322 E326 E333 E357 EMS22 EMS48
FLEET4 HMOFC IO11 IO12 IV12 **JT1** LOGS **LOGS1**
LPFE53 LPFP51 LPFP53 MAP11 ME1 ME152 **ME2** ME21
ME321 ME343 MED481 MED482 MED501 **MRE23** PLANS
PR12 PR14 PR32 RP4 RP6 S10 SAFETY **SQ50 TR1 TR2**
TR3 TR4 VNC9324C VNT2 VNT3 VNT4 WT27 WT4



VD

Ventura County Fire Dept >

Fri, Jun 28 at 3:46 PM

Notif-BRUSH FIRE |
3458 Sentinel Ct |
Simi Valley CH:2

Notif-BRUSH FIRE |
3458 Sentinel Ct |
Simi Valley CH:2

Sun, Jun 30 at 1:36 PM

Notif-BRUSH FIRE |
34 14'54.92"n / 118 39'47.14"w |
CH:2

Wed, Jul 3 at 1:50 PM

Notif-BRUSH FIRE |
2801 Sharp Rd | Simi
Valley CH:8

Notif-BRUSH FIRE |
2801 Sharp Rd | Simi
Valley CH:8

Fri, Jul 5 at 5:43 PM

Notif-BRUSH FIRE | 0
SB 101 SO / 23 EXIT 43B |
Thousand Oaks CH:2



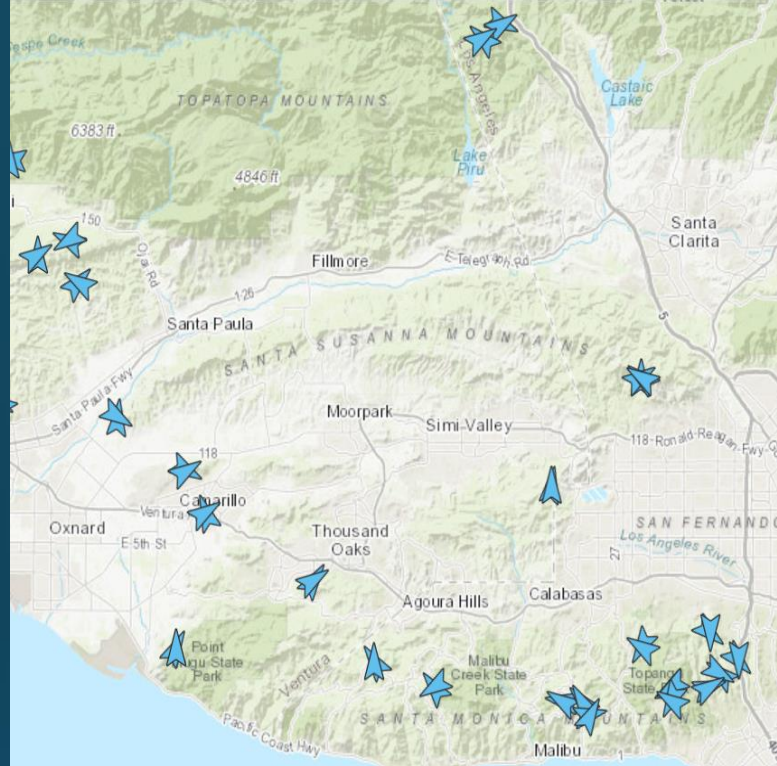
Text Message



Sequoia Fire

➤ Wednesday, 7/03

➤ 1 acre



Sharp Fire

➤ Wednesday, 7/03

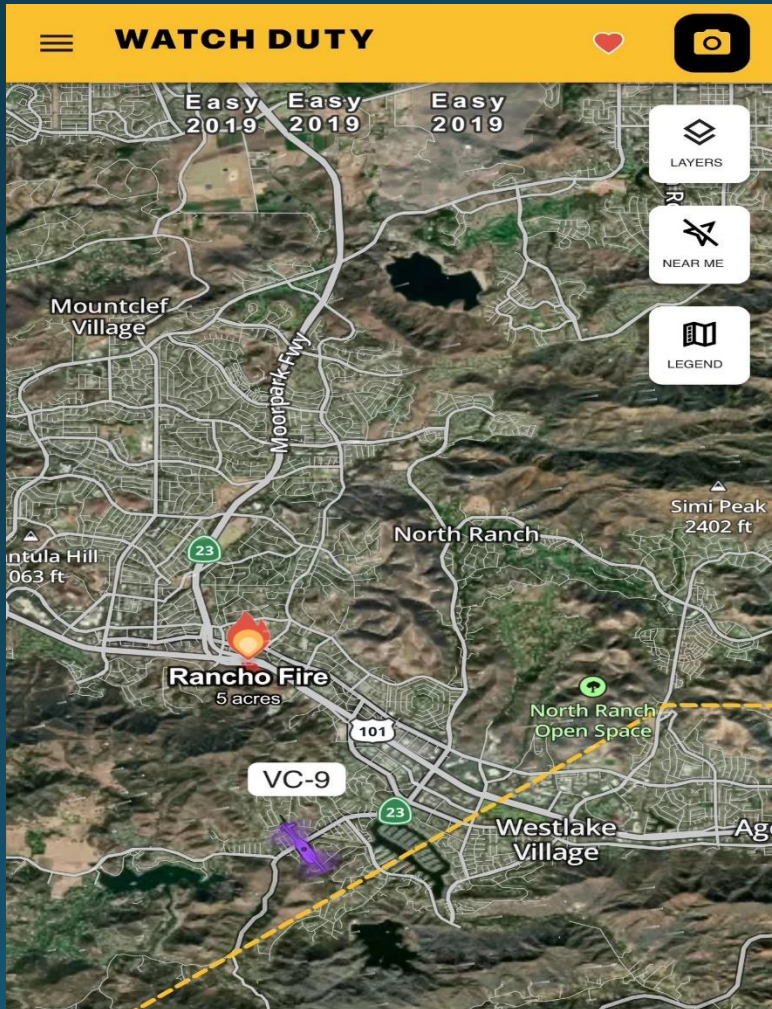
➤ 133 acres



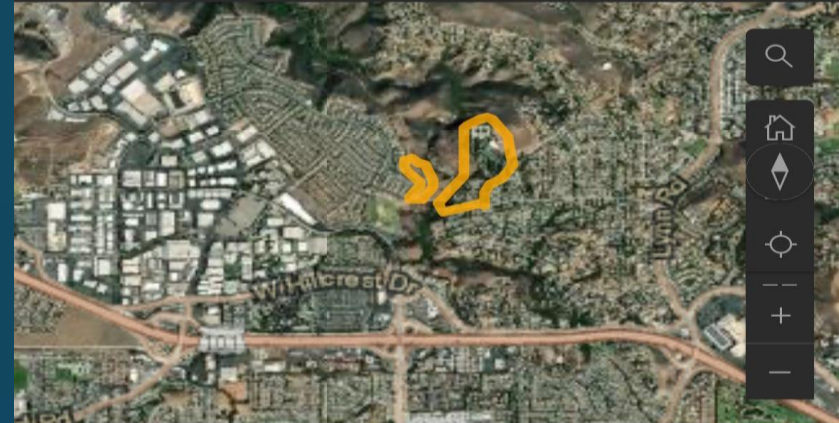
Rancho Fire

➤ Friday, 7/05

➤ 13.6 acres



Incident Map



Earthstar Geographics | Esri, HERE

Powered by Esri

EVACUATION ZONES



Zone Name: Zone 2
Issued: 7/6/2024 / 2:30PM
Status: Evacuation Warning
Nearest Shelter:
Notes: Evacuation warning due to brush fire.



Zone Name: Zone 1
Issued: 7/6/2024 / 2:30PM
Status: Evacuation Warning
Nearest Shelter: N/A
Notes: Evacuation warning due to brush fire.

View Fire

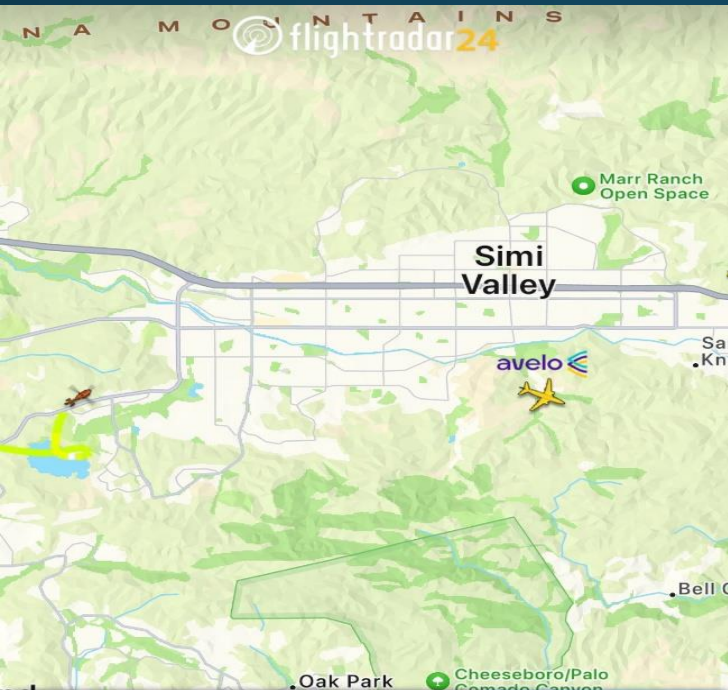
➤ Saturday, 7/06

➤ 14 acres


Rockfield Fire

➤ Thursday, 7/11

➤ 1.7 acres



N70VC H60
United States - Ventura County Fir...
© Maximilian Haertl

QTC CAMARILLO		N/A NOT AVAILABLE	BAROMETRIC ALT. 1,450 ft
Departed 0:09 ago			GROUND SPEED 117 mph
Sikorsky HH-60L Firehawk		REG. N70VC	



Ventu Fire

- Wednesday, 7/17
- 1 acre

Corbin Fire

- Sunday, 7/21
- 5 acres








Summary of Resources & Coordination



- Pulsepoint
- Texts from VCFD dispatch
- Alert wildfire cameras
- FlightRadar24
- Watch Duty
- VC Emergency
- Cal Fire Incidents Dashboard
- Social media
- Physical observation
- Follow-up inquiries and further coordination




Calleguas MWD 

@CalleguasMWD



In the past week, [@VCFD](#) has utilized Lake Bard, our surface water reservoir, to assist in fighting multiple brush fires in Simi Valley.  

We're proud to not only provide a reliable water supply to three-quarters of Ventura County residents, but to be a partner with local and regional agencies in the event of emergencies. 

Thank you [@VCFD](#) for your hard work and dedication!



"Our decision to utilize Lake Bard was crucial in controlling the recent brush fires," noted Ventura County Fire Chief Dustin Gardner. "Its proximity, ample water reserves, and clear flight path allowed us to deploy resources effectively, minimizing the spread and ensuring swift containment."



